



Practical Endodontics

LVI Endo Root Camp® Las Vegas, NV

Course Preparation Materials



Changing Dentistry - Changing Lives

Dear Doctor,

Thank you for registering for the upcoming two-day, hands-on Practical Endodontics Root Camp® to be held at the Las Vegas Institute for Advanced Dental Studies (LVI Global) Campus! We're certain that this will be one of the most valuable and enjoyable seminars you will ever attend. Our previous seminar participants have left with newly found confidence and enthusiasm about putting the latest endodontic techniques to use the very next week at their offices.

The Las Vegas Institute is located about 20 miles from the Las Vegas McCarran Airport. To help with the arrangements for your travel, please call **Jeri Laughlin of LVI Travel at (877) 805-3388**. Jeri can help you with your hotel reservations near the Institute, and if you wish, your air and rental car reservations. **We recommend you choose a hotel near the LVI facility. If you stay at a hotel on the "Strip," please allow at least 45 minutes to reach the facility during early morning weekday traffic.** LVI provides shuttle transportation from local hotels twice per day for Institute attendees.

Registration will begin on the first day at 7:00 am and the course will begin at 8:00 am. A continental breakfast will be available each morning, and lunch will be provided each day. Our hands-on portion will occur on the first day. LVI Endo Root Camp® will conclude at approximately 5:00 pm on day one and 4:30 pm on day two.

Please take a moment to review your packet, which contains the following important information:

- Course Introduction
- Badge and Certificate Form - please complete and return to us as soon as possible.
- Pre-Seminar Survey - please complete and return to us as soon as possible
- Course Outline
- Information about your Root Camp® Weekend
- A "Keeping Access Simple" article, which contains a link to a video demonstrating ideal access
- Safety Guidelines for Extracted Teeth
- Cancellation Policy
- Travel Information
- Amenities

Also, please bring magnification loupes and portable illumination (optional), a millimeter ruler, and several extracted teeth (anterior & posterior) already accessed according to the "Keeping Access Simple" article in this packet. Meanwhile, if there is anything we can do to assist you before the seminar, please don't hesitate to call. We look forward to seeing you at LVI. If you have questions, please call: the LVI team at 1-888-584-3237

Very Sincerely,

Director of Endodontics, LVI Global

Proposed Course Outline

Practical Endodontics Root Camp®

DAY ONE

Registration & Continental Breakfast
Welcome and Introduction
Taking the Mystery out of Endodontics
Obturation and Technique Summary
Tour of LVI
LUNCH
Introduction to Hands-on
Efficiency in Endo with Digital Radiography
Hands-on Session
 Prepare anterior and bicuspid teeth with the *EndoMagic!* Technique prior to attempting molars
 Try the Hornet Accessory Files on larger canals
 Use sonics at the sonics station where indicated
 Obturate with EZ-Fill and x-ray your results
 Get digital x-rays of your teeth throughout the morning
 Prepare and fill anterior and posterior teeth. Use *EndoMagic!* Hornet Files and the new Hornet Accessory Files
 Try the Apex Locators in the back of the room
Summary and Review of Hands-on
Day One Wrap-up
(Cocktail Party in the Rotunda)

DAY TWO

Sign In & Continental Breakfast
Anesthesia and Pain Control
Access, Morphology, and Working Length
Single Visit and Rubber Dam
Restoring the Endodontically Treated Tooth
LUNCH
Diagnosis
Restoring the Endodontically Treated Tooth
Endodontic Economics (EndoNomics™)
Endo Pearls
Problem Solving and Case Selection to Reduce Stress and Increase Profitability
Summary and Conclusion

Course Introduction

In this two-day, comprehensive, endo course, you will learn the secrets of practical, predictable and profitable endodontics. The intense, hands-on portion assures you will have the confidence to apply your new skills the day you return to your office. Our faculty doctors will show you how to remove the stress from your endodontic procedures as they present efficient systems, which will boost your hourly endo production immediately.

About LVI Endo Root Camp®

After Attending LVI Endo Root Camp® Doctors will:

- Be better prepared to make judgments concerning the cases they can successfully complete themselves and the ones they should refer for specialty care
- Understand the hazards of limited knowledge, have resources available for continued learning, and cultivate relationships with specialists in a team approach to patient care.
- Understand the differences (advantages and disadvantages) of many of rotary file systems available on the market today.
- Learn how to avoid most post-operative complications and how to best handle them, including the proper medications to prescribe when necessary.

Critique Forms and Goodie Bags

On the second day of the course at the afternoon break, you will be asked to complete the evaluation form for this course. After you complete the LVI Endo Root Camp® Education Evaluation Form located in the front pocket of your Course Manual, it will be turned in and your Letter of Verification of Attendance and a copy of your education credit letter will be given to you. Please note the importance of this completed form as we use the obtained information to continually improve our course, At that same break, you will receive a “goodie” bag containing numerous items, including the video demonstrating the entire root canal technique.

If you have questions, please contact us at LVI (888) 584-3237

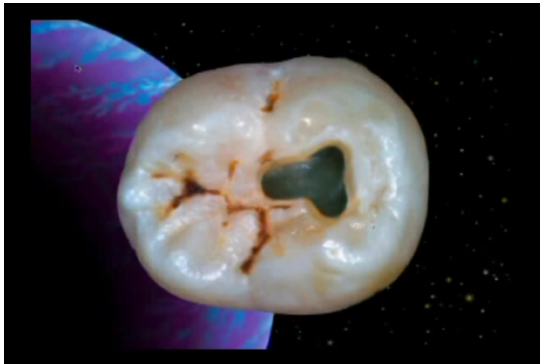
Keeping Access Simple

Attention all Seminar participants:

- Please bring with you a few extracted teeth, which you have already accessed.
- Selected teeth should have simple and normal anatomy. You will find learning any new technique much easier and more productive when you do not have to negotiate unusual, tortuous, or calcified anatomy.
- Ideally, bring one or two anteriors and one or two premolars. Any molars should be first or second molars with relatively straight roots of average length.
- X-ray all selected teeth to assure complete canal integrity (if you have time).
- Please create full access-do not compromise or attempt to keep access small. Open things up; you will thank yourself later.
- Insert a number 8 or 10 handfile to length to be certain there are no obstructions in the canals.

You will be taught a very conservative access preparation at the Root Camp, but for now, access your teeth just like you were taught in dental school. This means you will most likely remove more tooth structure than necessary, but since you are not going to restore these extracted teeth, an access that is too large is acceptable for teaching purposes.

During the course, you will see that the outline form of your access preparation is dictated by the anatomy of the tooth, and not by a drawing in a textbook. The following illustrations will give you a glimpse of what is possible, and you will learn to create ideal, straight-line access without sacrificing sound tooth structure.



For additional information on properly accessing the teeth, please click on the link below to watch a short video

[Access Part 1 and 2:](#)

www.youtube.com/watch?v=pbITK8DAPe4

****IMPORTANT REMINDER****

Please bring the following items for the hands-on portion of our seminar:

- A millimeter ruler
- Magnification loupes
- Illumination headlamps if available

Several extracted teeth (anterior & posterior) that have been accessed and sterilized.

Safety Guidelines for Extracted Teeth used at LVI Endo Root Camp®

Extracted teeth must be sterilized by autoclaving for 40 minutes at 121°C and 20 psi. Teeth can be wrapped in wet gauze and autoclaved in bags or in beakers with the teeth submerged in water. Please read below for additional information concerning sterilization and storage of extracted teeth.

Please note that these sterilized teeth should be radiographed to ascertain that the canals are not obstructed and the access opening should be prepared after the teeth have been sterilized. Please bring the processed radiographs to the course.

Extracted Teeth in Educational Settings (4/04)

Question: What are the infection control recommendations for using extracted teeth in educational settings?

Answer: Extracted teeth are occasionally collected and used for preclinical or post-graduate educational training. The teeth should be cleansed of visible blood and gross debris and maintained in a hydrated state in a well-constructed container with a secure lid to prevent leakage during transport. The container should also be labeled with the biohazard symbol. Because the recommendation is to autoclave these teeth before clinical exercises, use of the most economical storage solution (e.g., water or saline) might be practical. A liquid chemical germicide (e.g., sodium hypochlorite [household bleach] diluted 1:10 with tap water) could reduce bacterial accumulation during storage although it does not completely disinfect/sterilize both the external surface and interior pulp tissue.

Before use in an educational setting, the teeth should be heat-sterilized to allow for safe handling. Pantera and Shuster demonstrated elimination of microbial growth using an autoclave cycle for 40 minutes. Autoclaving teeth for pre-clinical laboratory exercises do not alter their physical properties sufficiently to compromise the learning experience. It is unknown, however, whether autoclave sterilization of extracted teeth affects dentinal structure such that the chemistry and micro chemical relationship between dental materials and the dentin is affected for purposes of dental materials research.

Using teeth that do not contain amalgam is preferable because they can be safely autoclaved. Extracted teeth containing amalgam restorations must not be heat sterilized because of the potential health hazard due to the risk of mercury vaporization and exposure. If extracted teeth containing amalgam restorations are to be used, immersion in 10% formalin solution for two weeks has been found to be an effective method of disinfecting both the internal and external structures of the teeth. When using formalin, the manufacturer MSDS should be reviewed for occupational safety and health concerns and to ensure compliance with OSHA recommendations.

References

CDC. Guidelines for infection control in dental health-care settings – 2003. MMWR 2003; 52(No. RR-17):1–66.

Pantera EA Jr, Schuster GS. Sterilization of extracted human teeth. J Dent Educ 1990; 54:283–285.

Parsell DE, Stewart BM, Barker JR, Nick TG, Karnes L, Johnson RB. The effect of steam sterilization on the physical properties and perceived cutting characteristics of extracted teeth. J Dent Educ 1998; 62:260–263.

Schulein TM. Infection control for extracted teeth in the teaching laboratory. J Dent Educ 1994; 58:411–413.

Tate WH, White RR. Disinfection of human teeth for educational purposes. J Dent Educ 1991; 55:583–585.

Travel Information

For all of your travel arrangements, please call Jeri our in-house travel manager, LVI Travel at (877) 805-3388. LVI Travel will introduce you to the most attractive hotel, airfare and car rentals available in Las Vegas. **Ask about our special rates in Summerlin The Red Rock Resort and Spa, JW Marriott Resort and Spa, and The Suncoast Hotel and Casino and the non-gaming Trump Towers on the strip.** Travel expenses are not included in your tuition.

Course Change & Cancellation Policy

Registration fees are non-refundable and must be exercised within two years. LVI Global, LLC (“LVI”) reserves the right to cancel courses 60 days prior to the scheduled date of a course or activity. Should LVI cancel a course or activity, LVI will apply the full value of any deposits and fees related to said course or activity to future LVI course or activities. Should LVI cancel a course or activity, you may also have the option of having the deposits returned to you. Fees remain non-refundable but, may be reapplied to another course or activity. LVI will not be responsible for any other fees, costs or consequential damages associated with canceling this LVI course or activity with the exception of non-refundable transportation or accommodation fees booked through LVI Travel. For courses requiring a live-patient, the treating Doctor must bring a patient of record. During courses conducted at LVI, I understand that photographs or video may be taken of me for educational and marketing purposes. I hold harmless LVI for any liability resulting from this production. I waive any right to inspect the finished production as well as advertising materials in conjunction with these photographs. I understand that I may receive marketing materials as a result of my attendance. In addition, by my signature on this form, I authorize LVI or its partners to contact me via mail, facsimile or email.

Change/Cancellation/Postponement Policy:

- A change, cancellation or postponement of course date is not complete without your required signature and date.

(The following do not apply if moving from TBD status to date selection)

- If change, cancellation, or postponement is received 60-90 days prior to registered course, 25% of the course fee will be forfeited.

- If change, cancellation, or postponement is received within 60 days, 50% of the course fee will be forfeited.

- If change, cancellation, or postponement is received less than 30 days prior to your registered class, 100% of the course fee will be forfeited.

CE Information

Important Information Regarding Your Continuing Education Credits

How Many CE Hours Can I Expect to Receive From This Course?

After completing this program, you will receive a verification letter of the appropriate AGD approved continuing education hours. These credits represent the lecture and participation portion of the course. **Your AGD number must be on file at LVI in order for us to file your education credit hours with the AGD.** You are required to complete information regarding AGD number and membership on the sign in sheet for each course. If that information is not completed, your education hours will not be sent to AGD.

When Will I Receive My CE Credits?

Your CE form will be presented along with your verification of attendance. Please copy the form and submit it to your governing agency.

Does LVI Submit My CE For Me?

Yes but only if you provide us with your AGD membership verification and your AGD number. It is your responsibility to keep the letter indicating your credits on file in your office and, if necessary submit your CE hours to the appropriate organization (i.e.: your state/territory, etc.).

What Happens If I Lose My CE Form?

Once you receive your CE forms, hold on to your originals and send copies when submitting your CE hours. **If your original letters are misplaced, LVI must charge a processing fee for necessary research. Replacement CE letters can take up to three weeks to receive.**

Educational Objectives

At the conclusion of the course participants should be able to:

- Identify an endodontic preparation that works, with proper case selections on virtually every tooth
- Define a technique to simplify emergency treatment for endo cases
- Utilize a new technique for obturating root canals that will increase efficiency of care for your patient
- Utilize rotary nickel–titanium files without fear of breakage
- Understand proper post placement, and when not to use posts
- Complete same day restorations of endodontically treated teeth
- Be diagnostically competent, know when to refer

Important Message about Your LVI Seminar

RE: LVI Endo Root Camp®

Your course will begin promptly at 8:00 am in the morning. There will be a continental breakfast between 7:00 am and 8:00 am each morning, and hosted lunches will be served each day. You must sign in each morning and Continental Breakfast and sign in start each day at 7:00 am.

LVI will provide transportation from the *JW Marriott, Suncoast Hotel and The Red Rock Hotels* to take attendees to the Las Vegas Institute each morning. Check with the hotel's Transportation Desk, Bell Stand or Concierge for pick up times and locations. The shuttles will also return to the hotels at the end of each day.

Get ready for an incredible experience!

The LVI/Practical Endodontics Teams

Practical Endodontics **877-478-9748**

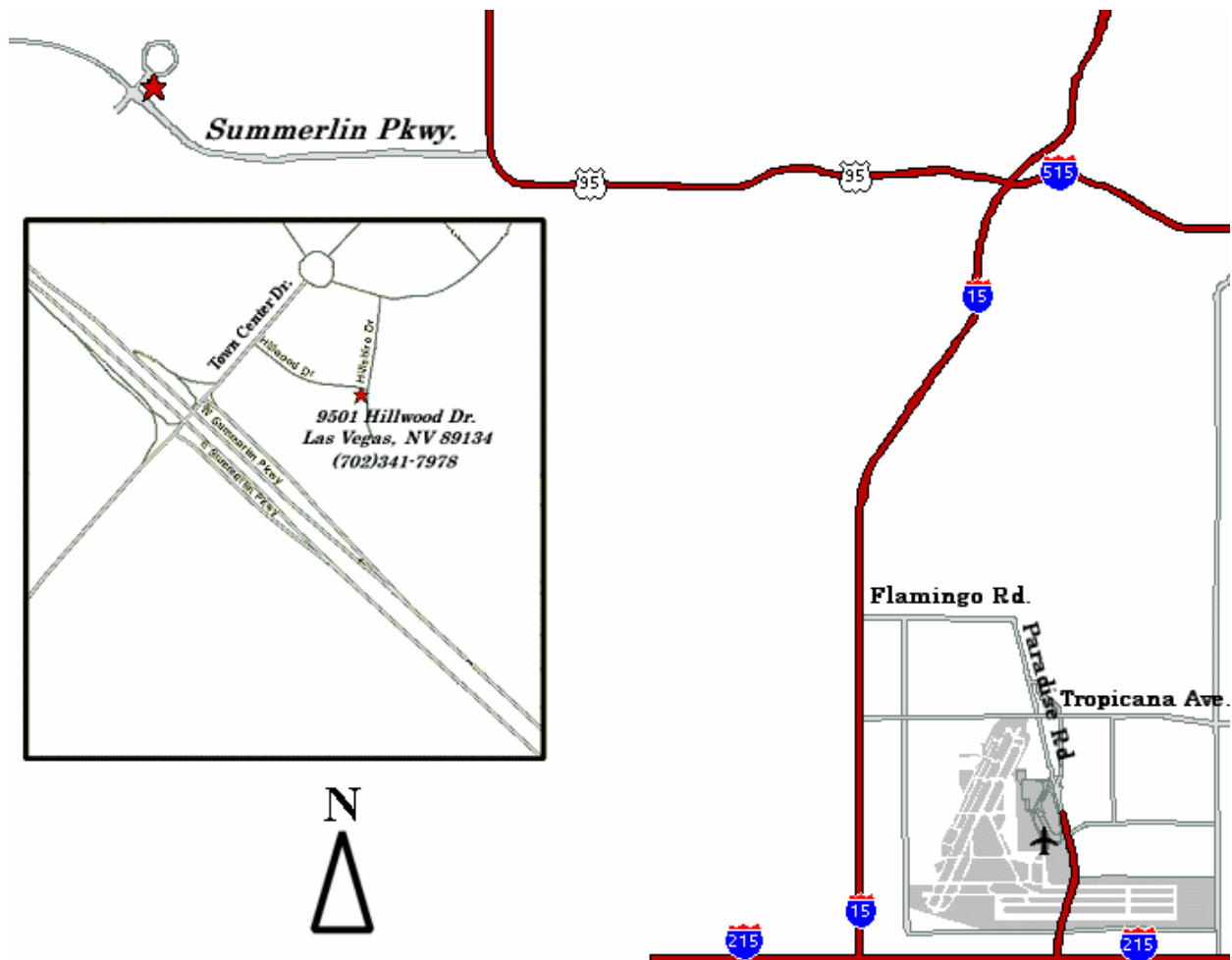
LVI **888-584-3237** or **(702) 341-7978**

LVI Travel **877-805-3388** or **(702) 341-8486**

Directions to LVI

Directions: McCarran Airport/Strip to LVI (Las Vegas Institute)

- Take the airport connector to **Paradise Road** head north to **Tropicana Ave**
- Make left turn on Tropicana to **I15 North** (right turn)
- Continue North to **I95 North** exit (head West toward Reno/Tonopah)
- Take the **Summerlin Parkway** exit
- Continue West and exit at **Town Center Drive**
- Turn right at the stop light onto **Town Center Drive**
- Take an **immediate** right at the first street (**Hillwood**)
- The institute is located on the right hand corner of **Hillwood** and **Hillshire**
- Address: **9501 Hillwood, Las Vegas, NV 89134**
Phone: **(888) 584-3237** or **(702) 341-7978**



Directions to Hotels From McCarran Airport

McCarran Airport to Suncoast & JW Marriott Hotels

- Take the airport connector to **Paradise Road** head north to **Tropicana Ave**
- Make left turn on Tropicana to **I-15 North** (right turn)
- Continue North to State Road **95 North** exit (head West toward Reno/Tonopah)
- Take the **Summerlin Parkway** exit
- Continue on **Summerlin Parkway** and Exit at **Rampart Blvd.**
- Turn left on **Rampart Blvd**, go 0.3 miles, both the **Suncoast** and the **JW Marriott** will be on the right
- For the **Red Rock Hotel** and Spa take the 215 West to the **Charleston Exit**. The hotel is at that intersection as you exit to the **East on Charleston**. The hotel will be on your right.

Directions to LVI from Hotels

- From the Sun Coast or JW Marriott
- Take **Rampart Blvd.** to **Summerlin Parkway West**
- Continue West and take the first exit at **Town Center Drive**
- Turn right at the stop light onto **Town Center Drive follow to Hillwood Drive (first Right)**
- From The Red Rock Hotel exit the parking and the Hotel going east or right on **Charleston** to the first intersection (stop Light) at **Town Center Drive**
- At Town Center Drive and turn Left or North on **to Town Center Drive** continue North until you pass under Summerlin Parkway continue to the first Right which is **Hillwood Drive**
- The institute is located on the right hand corner of **Hillwood** and **Hillshire**
- Address: **Las Vegas Institute, 9501 Hillwood Drive, Las Vegas, NV 89134**
(888) 584-3237 or (702) 341-7978

Frequently Asked Questions

Q: What is the weather like in Las Vegas?

A: In the winter months (December through mid-March) temperatures range from lows around 15 degrees with highs up to 60 degrees. In spring (mid-March through May) the weather is nice with highs between 70-80 degrees. Summer months (June through mid-September) are hot, highs up to 110 degrees, with nice warm summer nights. In the fall (mid-September to November) it cools down with temperatures back around 70-80 degrees.

Q: What should I wear when I come to LVI?

A: Business casual. We tend to keep the building cold so you might want to bring a light sweater.

Q: Is food served at LVI?

A: A continental breakfast is served at 7:30 each morning and lunch is provided each afternoon. Snacks are also available throughout the day.

Q: How far is the Las Vegas Strip from LVI?

A: Approximately 12 miles. It could take up to 30 minutes with traffic.

Q: Do you provide transportation to LVI?

A: LVI will provide transportation from the Suncoast, The Red Rock and the JW Marriott Hotels to the Institute each day. The shuttles run twice per day: from the hotels to LVI in the morning and from LVI to the hotels in the afternoon. Check with your hotel's bell desk for exact pick-up times and locations.

Q: If I take a cab, what do I tell the driver?

A: Take I-15 north to I-95 North to Summerlin Parkway. Exit right on Town Center Blvd and make your first right on Hillwood Dr. (see "Directions to LVI" in this booklet for more detailed directions).

Q: Where do I check-in when I first arrive at LVI?

A: For every course you attend at LVI, you must check-in on the first day in the Hillwood Building (the main building). However breakfast will be served in the dining hall located in the Hillshire Building (the new building).